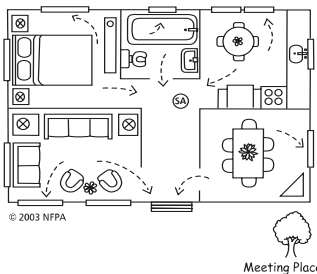




Home Escape Plan

Memorize your fire department's emergency phone number and write it here: _____

Use the space below to create your home fire escape plan.



- Draw a floor plan, or a map of your home. Show all doors and windows.
- Mark two ways out of each room.
- Mark all of the smoke alarms with **SA**. Smoke alarms should be on every level of your home. Make sure there is an alarm in or near every sleeping area.
- Pick a family meeting place outside where everyone can meet.
- Remember, practice your plan at least twice a year!

